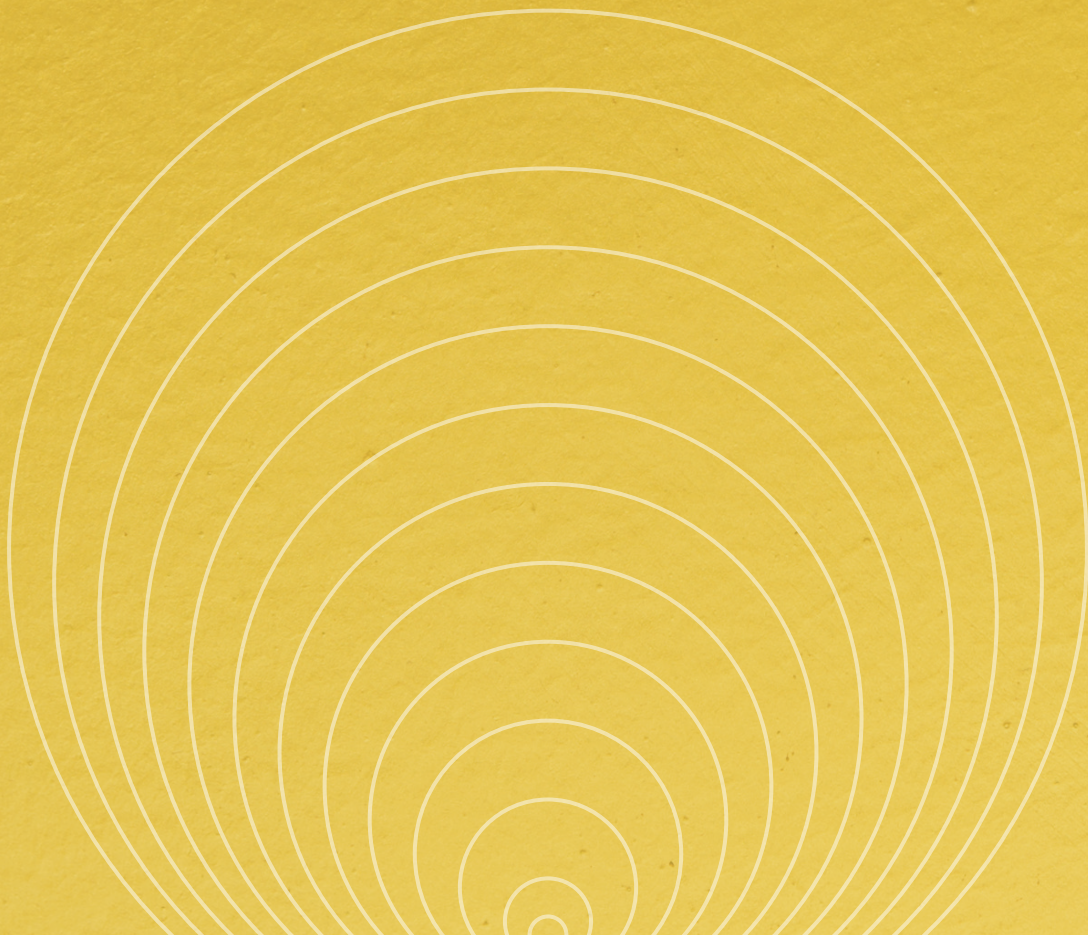


KINGSLEY NAPLEY
WHEN IT MATTERS MOST

Supporting HNW Individuals and their Families



Welcome

Kingsley Napley has been looking after the legal needs of wealthy individuals and their families for more than eighty five years.

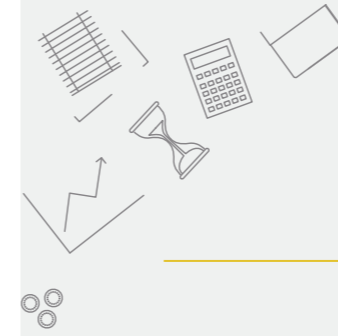
Over that time we have built long-standing relationships with clients, providing a comprehensive range of services to help them efficiently and discreetly manage different aspects of their lives.

Our clients range from entrepreneurs and business owners, family businesses and investors, many with international assets and family spread around the world. They wish not only to manage and protect their wealth, but also to make a difference to their communities and wider society, by establishing charities, pursuing philanthropy and investing sustainably.

Our private wealth team brings together leading lawyers from our private client, family, immigration, real estate, dispute resolution, criminal and corporate and commercial teams. They work closely with our other practice areas, including employment and criminal litigation, to ensure that our clients receive the best possible advice at all times.

We would be delighted to speak with you to discuss how we can help you to make the most of your family's assets and wellbeing, both today and long in the future.

James Ward
PARTNER



Your Wealth

Our expert private wealth team are able to provide advice on every aspect of wealth planning, offering practical, cost-effective solutions on the life and death issues that matter most.

Many of our clients have international assets and family spread throughout the world and we are able to help structure their affairs how they want, within various tax and legal jurisdictions. We work with business leaders, entrepreneurs, sportspeople and entertainers and high net worth individuals to protect their assets and their families.

Our private client team has many decades of experience and prides itself on being for our clients every step of the way – often for generations. We will often work side by side with your other advisors such as accountants and financial advisors, to ensure you receive consistent, strategic advice.

OUR SERVICES INCLUDE

- Wealth structuring and succession planning
- Powers of attorney
- UK tax for international clients
- Landed Estates
- Complex probate
- Cross border mental capacity issues
- Trust creation and advice
- Charity creation and advice
- Succession of Family Businesses

"Their commerciality is excellent, their service and availability are good and their individual lawyers punch above their weight"

CHAMBERS & PARTNERS HIGH NET WORTH GUIDE



James Ward
PARTNER

+44 (0)20 3535 1653 | jward@kingsleynapley.co.uk

Your Disputes

Disputes over family wealth can often be difficult and stressful, especially when family conflict is involved, or where the dispute involves issues about the mental health or capacity of loved ones.

These disputes often spread across multiple jurisdictions and involves substantial assets in sometimes complex structures, and require litigators with genuine expertise in the field.

We are seen as a leading firm when it comes to dealing with serious (and often high profile) disputes over family wealth, especially where fraud, undue influence or breaches of fiduciary duty are alleged. Our expertise in preserving assets and asset recovery in complex and high value cases sets us apart.

We act for beneficiaries, trustees, executors, protectors and attorneys in navigating these disputes in the most effective way, either in court or by alternative dispute resolution such as mediation.

OUR SERVICES INCLUDE

- Contesting wills
- Trust disputes
- Breaches of fiduciary duty
- Powers of attorney/court of protection disputes
- Professional negligence
- Civil fraud and investigations
- Dealing with freezing and disclosure orders
- Waqar Shah: Partner in the Dispute Resolution department, specialising in complex tax matters

"Kingsley Napley is one of the go-to names for difficult private wealth litigation, ...very down to earth, great with clients and effective negotiators"

CHAMBERS & PARTNERS, 2020



Ryan Mowat

PARTNER

+44 (0)20 7814 1238 | rmowat@kingsleynapley.co.uk

Your Tax



We advise high net worth individuals on either challenging HMRC where we think tax has been overpaid (or should not be paid), or defending clients subject to tax investigations into their personal or business affairs.

We are considered to be one of the only full-service tax disputes and investigations team in the UK. Whether there is a technical tax argument with HMRC to consider or a full-blown criminal or civil fraud tax investigation to defend, we can help you or your business (working alongside accountant where necessary) to navigate the path successfully.

OUR SERVICES INCLUDE

- VAT Disputes
- Residence and Domicile Enquiries
- CGT or Income Tax Disputes
- Civil Tax Investigations
- Criminal Tax Investigations
- Pre-emptive Disclosures
- Penalty Appeals/Mitigation
- All Aspect of Personal and Business Tax Disputes and Investigation

"Waqar Shah is first rate and a future leader in this field. He is very client-friendly and achieves excellent results."

LEGAL 500 UK, 2023



Waqar Shah

PARTNER

+44 (0)20 7566 5295 | wshah@kingsleynapley.co.uk



Your Business

We have a long history in acting for entrepreneurial clients in their private and business lives, whether they are investing in a business, looking for their next acquisition or seeking an exit as part of a wider succession planning exercise.

We provide a personal and responsive service to our entrepreneurial clients, often taking a trusted adviser role whilst they navigate through a possibly life-changing liquidity event. We can assist in planning for an exit, implement tax efficient measures in the run-up to any sale to maximise returns and take a client through the sales process itself.

We also advise on the establishment and ongoing management of family investment companies as an alternative to family trust structures to enable the founders to retain control over assets whilst accumulating wealth in a tax efficient manner and enabling future succession planning.

OUR SERVICES INCLUDE

- Acquisitions, restructurings and disposals
- Family investment companies and partnerships
- Advising on angel investments
- Advising on director's duties
- Tax planning relating to business assets
- Dealing in luxury assets

"Enormous Experience and great depth of practice"

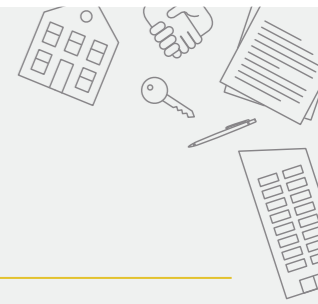
THE LEGAL 500



Anthony Macpherson

PARTNER

+44 (0)20 7814 1213 | amacpherson@kingslyenapley.co.uk



Your Home

Our Real Estate team act for many families on a wide range of both residential and commercial property transactions.

Our residential property team possess a wealth of experience in dealing with prime and super prime London houses and apartments, as well as houses in the country. We have particular experience of dealing with listed properties.

We understand how stressful it can be to acquire a property and we will guide you through the process as swiftly as possible with a hands-on approach. Our team will always work to protect your interests and structure the transaction in the most efficient way, providing a truly personal service based on our multi-disciplinary expertise.

OUR SERVICES INCLUDE

- Sale and purchases of freehold and leasehold property
- Purchase of new build properties
- Acting for borrowers in relation to their mortgage
- Advising lenders on purchases, sales and security documentation
- Property management including Licences to Alter
- Lease extensions
- Purchase of properties using the proceeds of sale from crypto currencies

"The team has extensive experience of acting for high-net-worth individuals and those in the public eye. They are adept at handling such clients and matters sensitively, with utmost discretion and with a very genuine personal touch."

THE LEGAL 500 UK, 2021



Bethan Owen

PARTNER

+44 (0)20 7814 1239 | bowen@kingslyenapley.co.uk

Your Location

We specialise in assisting high net worth individuals and their families looking to relocate to, or remain in, the UK.

Our team can provide clear, pragmatic advice on the potential options available to investors, founders and owners looking to establish businesses in the UK. We will advise on the best solution for you and your family, and can support you from initial planning through to obtaining your visas, permanent residence and British Citizenship.

We also have particular expertise helping those with exceptional talent in their field to apply for the Global Talent visa programme. Following the closure of the investor scheme programme in 2022, we are working with clients to find alternative solutions to allow them to make their home in the UK.

We are also able to assist partners and senior executives transferring to work in a UK office across a broad range of industries, while our international network of trusted immigration co-counsel also allows us to support clients who wish to live, work and travel all over the world.

OUR SERVICES INCLUDE

- Tier 1 investor visa extensions and ILR for those already holding this visa
- Entrepreneurs and start ups
- Global talent
- Bringing your family to the UK
- International surrogacy and adoption
- Obtaining British citizenship
- European citizens and their families
- Global residence and citizenship solutions
- Pre-immigration tax advice

"Kingsley Napley leads the immigration outfits in the UK"

WHO'S WHO LEGAL



Nicolas Rollason

PARTNER

+44 (0)20 7814 1276 | nrollason@kingsleynapley.co.uk

Your Family

We are recognised nationally and internationally as one of the best family law teams in the UK for our expertise in both finance and cases relating to the well-being of children.

We assist clients from all walks of life and at all stages, whether at the beginning of a relationship and planning their future, or at the end of a relationship. Many of our clients or their spouses have international connections, are high net worth individuals or professionals, and may have a public profile.

We understand how international wealth, trusts and inherited wealth impact upon divorce settlement and have strong relationships with matrimonial lawyers and other professional advisors across the world. We can also call upon the expertise of our Private Client team and where relevant, the services of trusted accountants, financial and pensions advisers.

OUR SERVICES INCLUDE

- Prenuptial and postnuptial agreements
- Divorce and separation
- Arrangements for the children
- International family law
- Financial arrangements
- Mediation
- Trusts

"One of the best family departments in London. The firm as a whole provides a "Rolls-Royce" service, with particular expertise in cases with an international/multi-jurisdictional element"

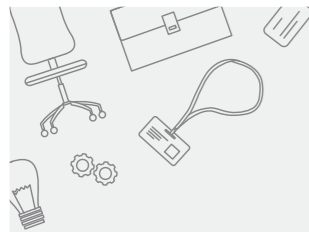
THE LEGAL 500 UK, 2020



Jane Keir

PARTNER

+44 (0)20 7814 1273 | jkeir@kingsleynapley.co.uk



Your Career

We have a dedicated team of employment and partnership specialists who advise and represent HNW individuals and their families across the full spectrum of potential issues.

This includes:

- Working with HNW individuals in relation to their own careers, whether as senior executives, board directors, partners, entrepreneurs, and high-profile public figures, across a wide variety of sectors;
- Providing employment advice and support to businesses owned by HNW individuals and their families;
- Dealing with any issues which may arise in connection with any domestic staff of HNW families.

We appreciate that employment and partnership advice can sometimes be just one part of the solution to a complex matrix of issues. We regularly work with other teams at our firm (and our lawyer contacts worldwide) to deliver a seamless client service, for example with KN's regulatory, corporate & commercial, tax, criminal, reputation management and immigration teams.

OUR SERVICES INCLUDE

- | | |
|---|---|
| → Employment and partnership disputes | → Restrictive covenants and team moves |
| → Discrimination claims | → Terminations and settlement agreements |
| → Disciplinary and grievance procedures, absence and performance management | → Employment contracts, policies and procedures |

"Their ability to put themselves in their clients' shoes sets them apart."

CHAMBERS & PARTNERS



Nick Ralph

PARTNER

+44 (0)20 7814 1222 | nralph@kingsleynapley.co.uk



Your Security

Our international protection team provides a full suite of legal services and specialist support and advice to individuals facing complex situations across multiple jurisdictions.

We regularly advise clients facing extradition requests or INTERPOL red notices arising from commercial disputes or politically motivated persecution.

We are recognised experts in dealing with complex human rights, asylum and international protection immigration issues and have extensive experience of litigating judicial review cases and appeals.

OUR SERVICES INCLUDE

- | | |
|---------------------------|-------------------------------------|
| → Extradition | → Politically motivated persecution |
| → INTERPOL red notices | → Financial sanctions |
| → Human rights and asylum | → Reputation and media |

"A marketing leading extradition group that is certainly top of the tree."

CHAMBERS 2020



Rebecca Niblock

PARTNER

+44 (0)20 7814 1281 | rniblock@kingsleynapley.co.uk



Your Liberty

Whilst a criminal investigation is the last thing anyone would expect, our unrivalled team of criminal defence lawyers can protect your rights when you need it most.

We have been involved in the most significant "white collar" and serious crime cases of the last 50 years and are recognised as one of the leading practices in the UK. We act for those subject to investigation and prosecution by agencies including the SFO, CPS, FCA, HMRC, CMA, NCA and the Insolvency Service. We are often instructed in multi-jurisdictional investigations conducted by overseas agencies such as the US DOJ and FBI.

We regularly assist HNW individuals who are targeted by law enforcement and who may face dawn raids; interviews under caution and the seizure and restraint of their assets.

OUR SERVICES INCLUDE

- White collar and financial crime investigations
- Serious and general crime
- Tax investigation and prosecutions
- Insider dealing and market abuse
- Cartels and completion
- Bribery and corruption
- Dawn raids and interviews under caution
- Asset denial
- Freezing and restraint orders
- Account freezing/forfeiture orders

"Multi-disciplinary, multi-jurisdictional, high profile, long established practice, perhaps the most famous firm in the field."

LEGAL 500 UK 2021



Louise Hodges

PARTNER

+44 (020) 7814 1236 | lhodges@kingsleynapley.co.uk



Your Reputation

We have a long history of acting in high profile matters where the media spotlight has been shone at our clients. When a crisis or potential crisis hits, clients and their advisors turn to us.

The reputation and media team specialises in defamation, privacy, harassment, business branding, and media agreements. We act for individuals and businesses with both claimant and defendants, which provides us with a special insight into resolving disputes quickly and efficiently.

The reputation and media team is available at all times and on an emergency basis. Whether it is the first approach from a reporter, a photograph that has been taken without your consent, a threat to reveal your private information, or a defamatory statement that either has been made against you or that you or your business is accused of making, issues of confidential personal or business information, or simply that you wish to put protective measures in place, we are here to help you.

OUR SERVICES INCLUDE

- Dealing with harassment whether domestic or by the press
- Defamation – for both claimant and defendant
- Protecting clients from media intrusion into their private lives
- Image control, especially of online photos published without consent
- Corporate reputation management for large public and private organisations
- Reputation management for professionals

"They react quickly and professionally and are available 24/7. They always play to win and are prepared to think out of the box and be creative."

CHAMBERS & PARTNERS HIGH NET WORTH GUIDE, 2020



Helen Morris

PARTNER

+44 (0)20 7566 2938 | hmorris@kingsleynapley.co.uk

KINGSLEY NAPLEY

WHEN IT MATTERS MOST

SCAN TO LEARN MORE



www.kingsleynapley.co.uk

info@kingsleynapley.co.uk

+44 (0)20 7814 1200

DX22 Chancery Lane

Kingsley Napley LLP, 20 Bonhill Street, London, EC2A 4DN

Kingsley Napley LLP is authorised and regulated by the Solicitors Regulation Authority, registration number 500046. This brochure is for information purposes only. It does not contain, and neither should it be relied on as, legal, regulatory, financial or tax advice. If you would like legal advice or legal assistance, please contact us.