

Kingsley
Napley

A guide to Bonhill event spaces

June 2021

1. Seminar suite
2. Mediation suite
3. Lennie's

1. Seminar suite

This is the main and largest space for external-facing events with many different set-up configurations and its own catering space.

Location: Ground floor

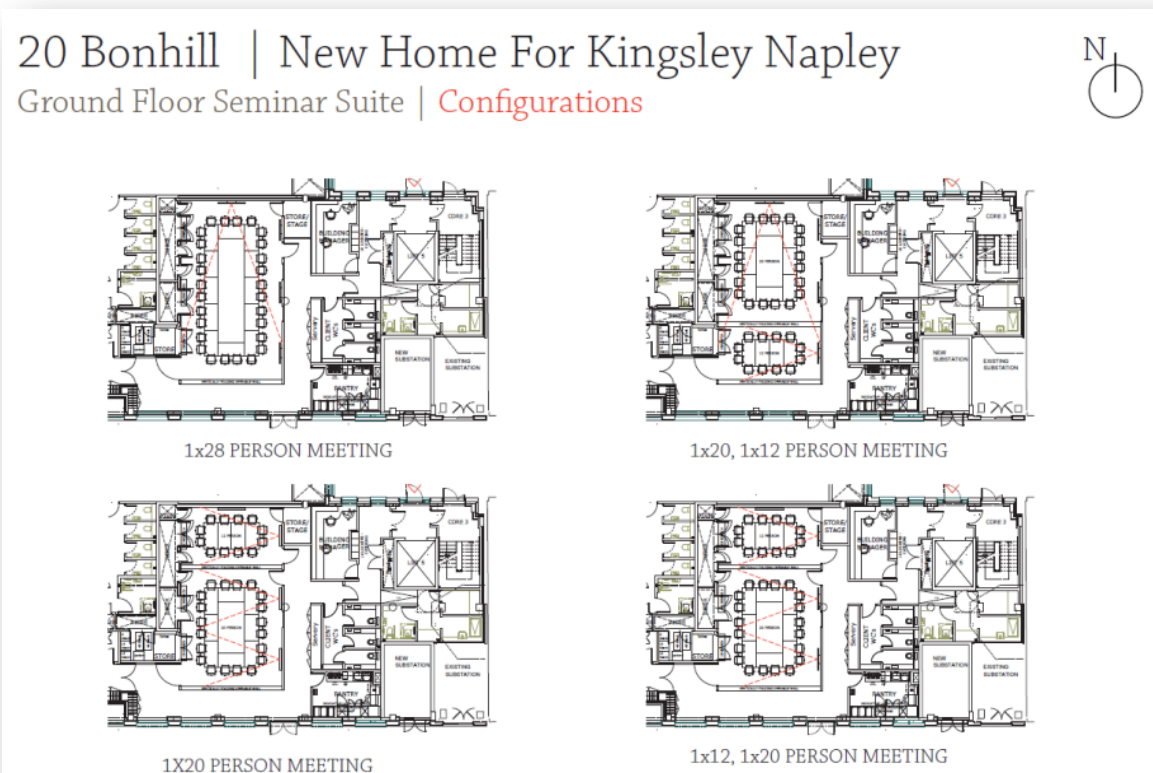
Room name(s): G.01, G.02 and G.03

Capacity: Varies according to set-up (see below)

AV set-up:

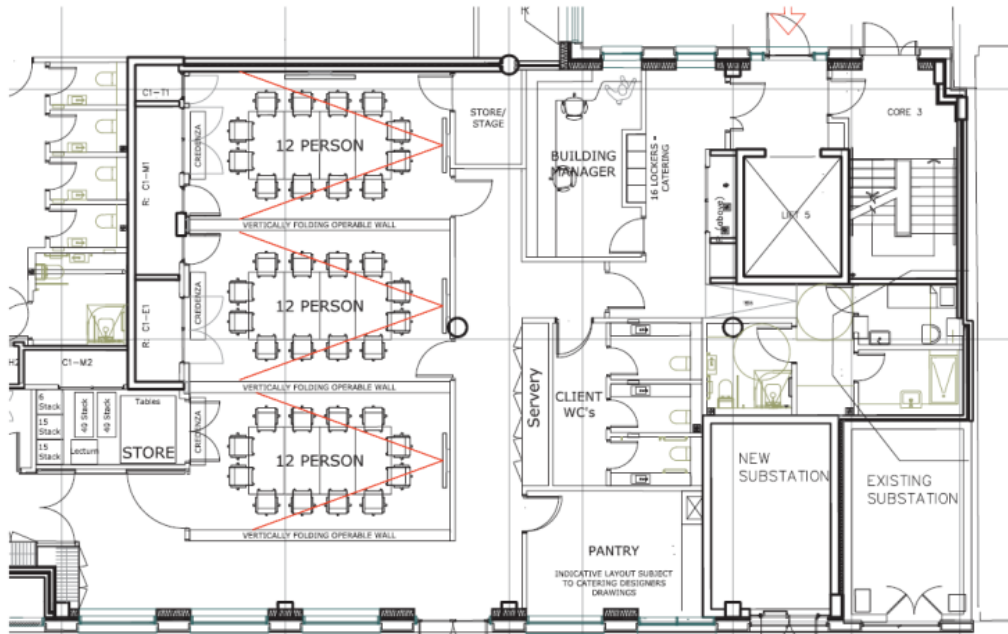
- Stage
- One very large screen at the front for presenting for conjoined rooms format
- Smaller screens on side wall on articulated brackets and can be used for repeater screens
- Video conferencing capabilities for divided and conjoined rooms
- Roaming microphone

Best for larger external events such as conferences, seminars or receptions



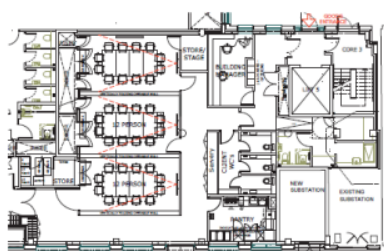
20 Bonhill | New Home For Kingsley Napley

Ground Floor | Seminar Suite

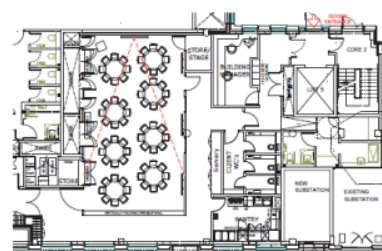


20 Bonhill | New Home For Kingsley Napley

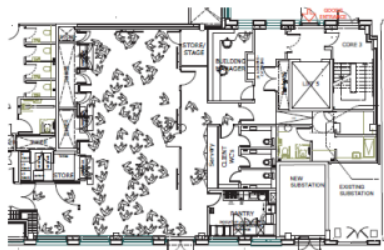
Ground Floor Seminar Suite | Configurations



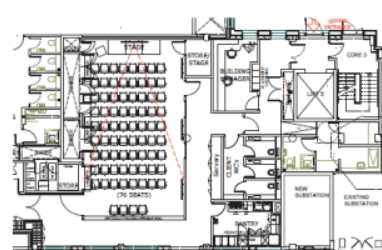
3x12 PERSON MEETING



BANQUET X 64 SEATING



100 PERSON COCKTAIL EVENT



76 PERSON SEMINAR

2. Mediation suite

Self-contained event space. There are four rooms, two of which can be conjoined in the middle, which are segregated from the rest of the meeting rooms on the 5th floor and can be shut off if needs be, meaning that outside the rooms themselves could be part of the events/catering/drinks reception space if needed. This event suite has the best views in the whole building.

Location: 5th floor

Room name(s): 5.11, 5.12, 5.13 and 5.14

Capacity:

- Theatre style: 20
- Boardroom: 12

AV set-up:

- In the conjoined format, there are full video conferencing capabilities (there are audio conferencing capabilities for all rooms separately – but not video conferencing)
- One very large screen at the front for presenting for conjoined rooms format with two smaller screens on the side by the corridor

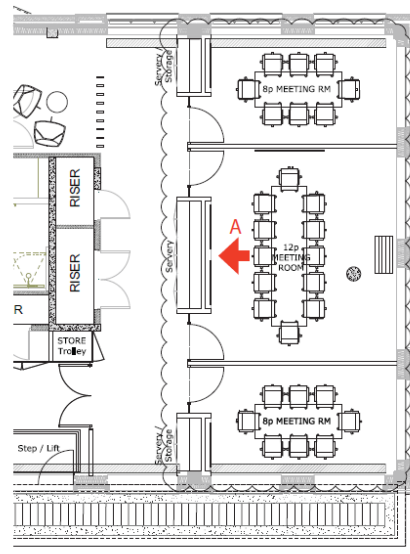
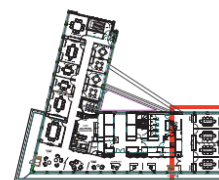
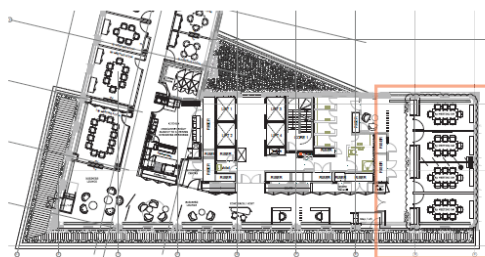
Best for smaller seminars, breakfast briefings, etc.

20 Bonhill | New Home For Kingsley Napley

Fifth Floor | Mediation Suite - Elevation



ELEVATION - A



3. Lennie's:

All of the furniture in the open part of the floor plan (with the large benches) are moveable and can be taken elsewhere on the floor to create circulation and event space. There is a large drop down projector screen at the. Lennie's also feature a balcony and one of the best views in the building.

Location: 4th floor

Room name(s): Lennie's

Capacity: TBC but approx 100 people + external space

AV set-up:

- One very large drop-down projector screen at the front for presenting for events/town halls
- Smaller screens on both sidewalls of the café and can be used for repeater screens
- Roaming microphone provision TBC

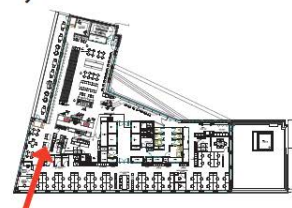
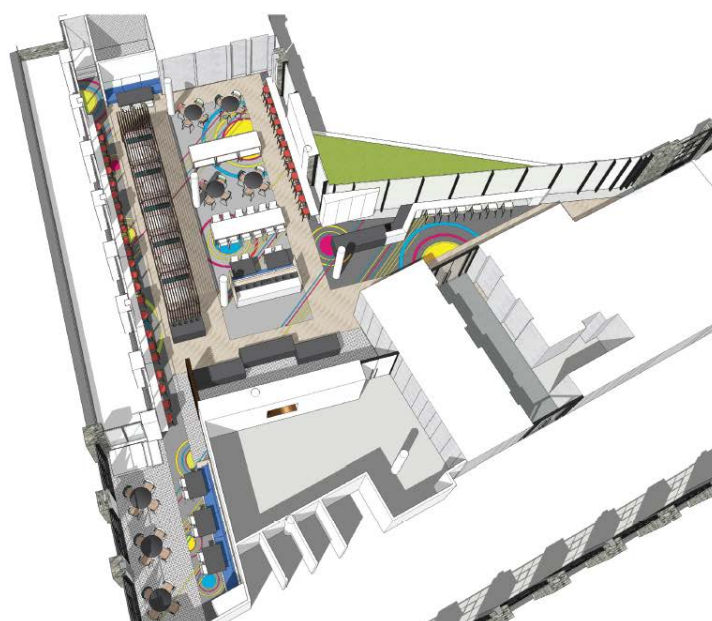
Best for drinks and events and if you require an external space.

PLEASE NOTE:

- Lennie's can be used for INTERNAL events from 9 pm to 5.30 pm
- Lennie's can be used for EXTERNAL events from 5.30 pm only

20 Bonhill | New Home For Kingsley Napley

Fourth Floor | Restaurant - *Birds-eye View*



20 Bonhill | New Home For Kingsley Napley

Fourth Floor | Restaurant - **Birds-eye View**



20 Bonhill | New Home For Kingsley Napley

Fourth Floor | Restaurant - **Internal View**

